







-  Racombes sandy clay loam, 0 to 1 percent slopes
-  Hidalgo sandy clay loam, 0 to 1 percent slopes
-  Hidalgo fine sandy loam, 1 to 3 percent slopes
-  Hidalgo fine sandy loam, 0 to 1 percent slopes

Legend:

-  Study Corridor
-  Drain Flow

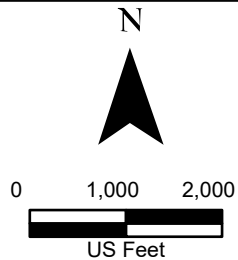
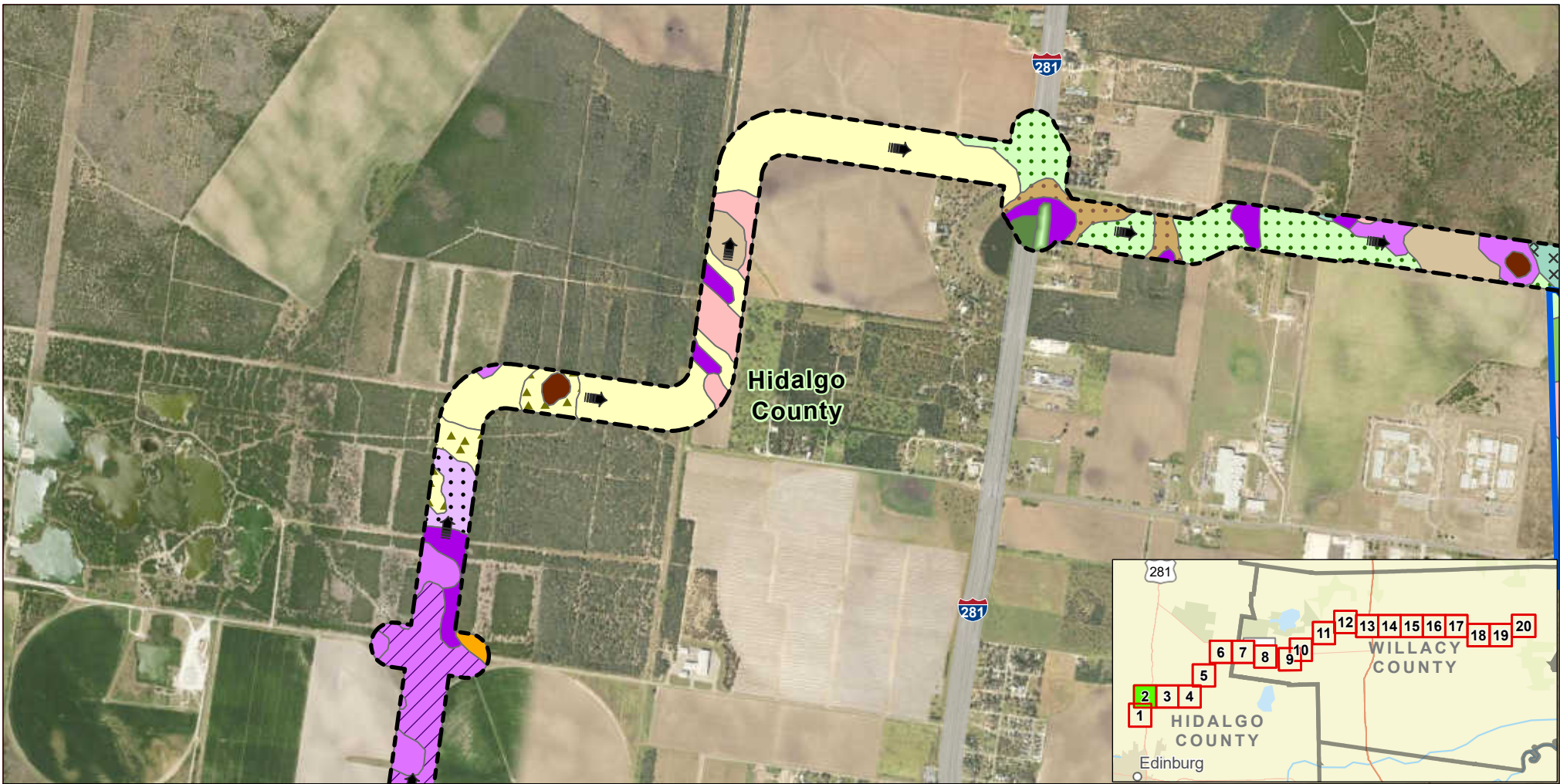


Exhibit 10 Alternative 1 Soils Map Sheet 1 of 20 Raymondville Drain Project

Author : Joel F. Aguirre Updated : 10/9/2023

DISCLAIMER: RRP Consulting Engineers makes no guarantees as to the accuracy of data used in the construction of this map.



- | | | | | |
|--|--|--|---|--|
| Brennan fine sandy loam, 0 to 1 percent slopes | Delfina fine sandy loam, warm, 0 to 2 percent slopes | Hebronville sandy loam, 1 to 3 percent slopes | Hidalgo sandy clay loam, 0 to 1 percent slopes | Rio clay loam, ponded |
| Brennan fine sandy loam, 0 to 3 percent slopes | Hargill fine sandy loam, 0 to 1 percent slopes | Hidalgo fine sandy loam, 0 to 1 percent slopes | Nueces fine sand, 0 to 3 percent slopes | Tiocano clay, 0 to 1 percent slopes, occasionally ponded |
| Comitas loamy fine sand, 0 to 3 percent slopes | Hebronville sandy loam, 0 to 1 percent slopes | Hidalgo fine sandy loam, 1 to 3 percent slopes | Pits, borrow | Willacy fine sandy loam, 0 to 1 percent slopes |
| | | | Racombes sandy clay loam, 0 to 1 percent slopes | Willacy fine sandy loam, 1 to 3 percent slopes |

Legend:

- Study Corridor
- Drain Flow
- Proposed Detention Basin

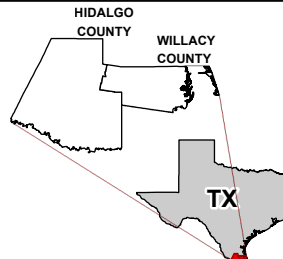
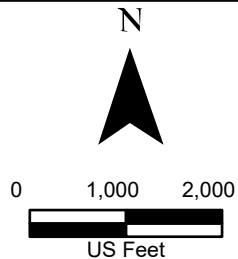
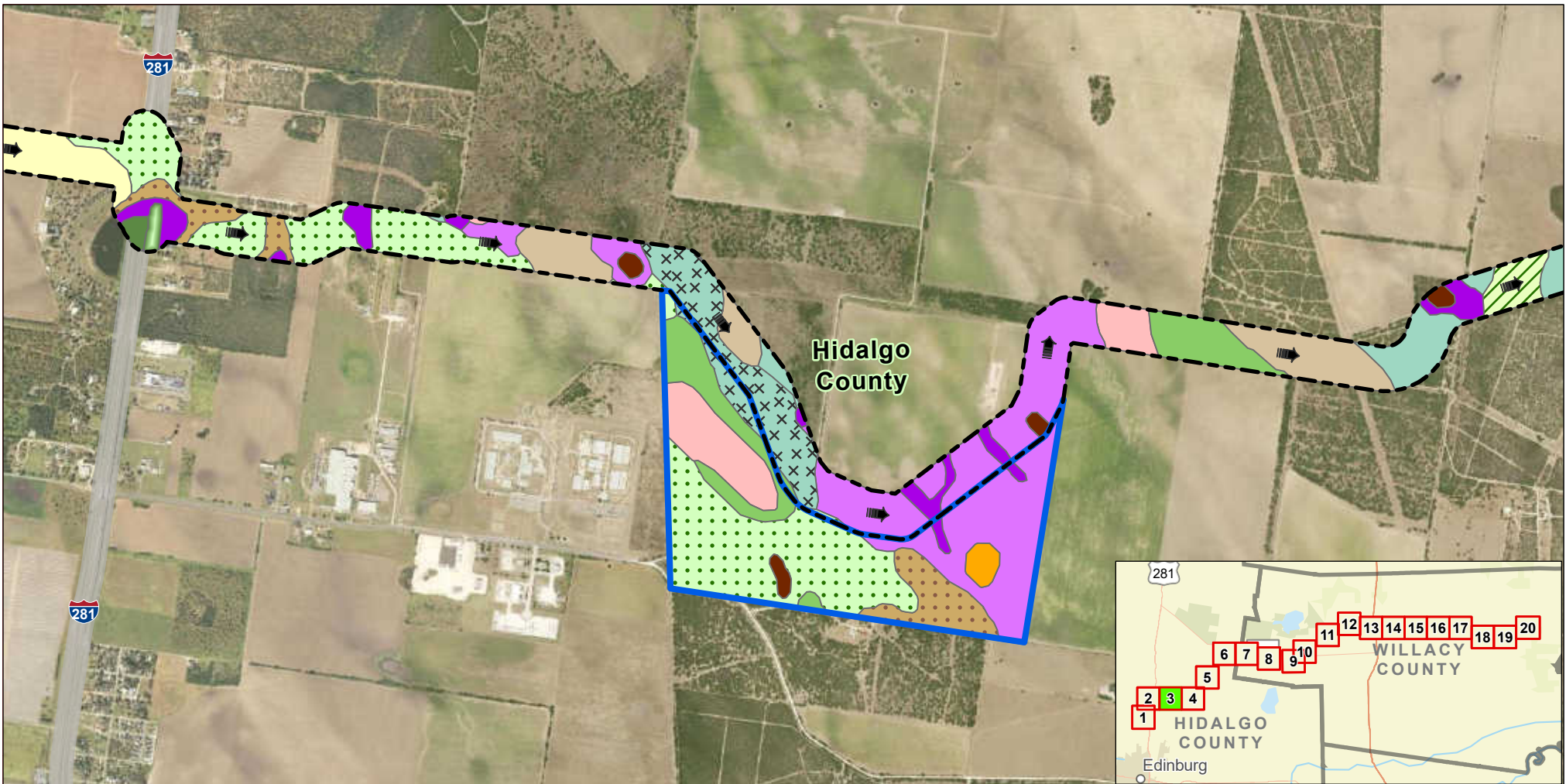


Exhibit 10 Alternative 1 Soils Map Sheet 2 of 20 Raymondville Drain Project

Author : Joel F. Aguirre Updated : 12/18/2023

DISCLAIMER: RRP Consulting Engineers makes no guarantees as to the accuracy of data used in the construction of this map.



- | | | | | |
|--|--|--|---|--|
| Brennan fine sandy loam, 0 to 1 percent slopes | Hargill fine sandy loam, 0 to 1 percent slopes | Hebbronville sandy loam, 1 to 3 percent slopes | Pits, borrow | Tiocano clay, 0 to 1 percent slopes, occasionally ponded |
| Comitas loamy fine sand, 0 to 3 percent slopes | Hargill fine sandy loam, 1 to 3 percent slopes | Hidalgo fine sandy loam, 0 to 1 percent slopes | Racombes sandy clay loam, 0 to 1 percent slopes | Willacy fine sandy loam, 0 to 1 percent slopes |
| Delfina fine sandy loam, warm, 0 to 2 percent slopes | Hebbronville sandy loam, 0 to 1 percent slopes | Hidalgo fine sandy loam, 1 to 3 percent slopes | Rio clay loam, ponded | Willacy fine sandy loam, 1 to 3 percent slopes |

- Legend:**
- Study Corridor
 - Drain Flow
 - Proposed Detention Basin

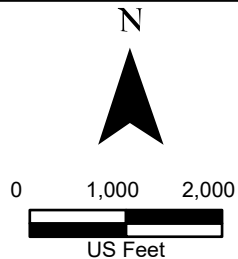
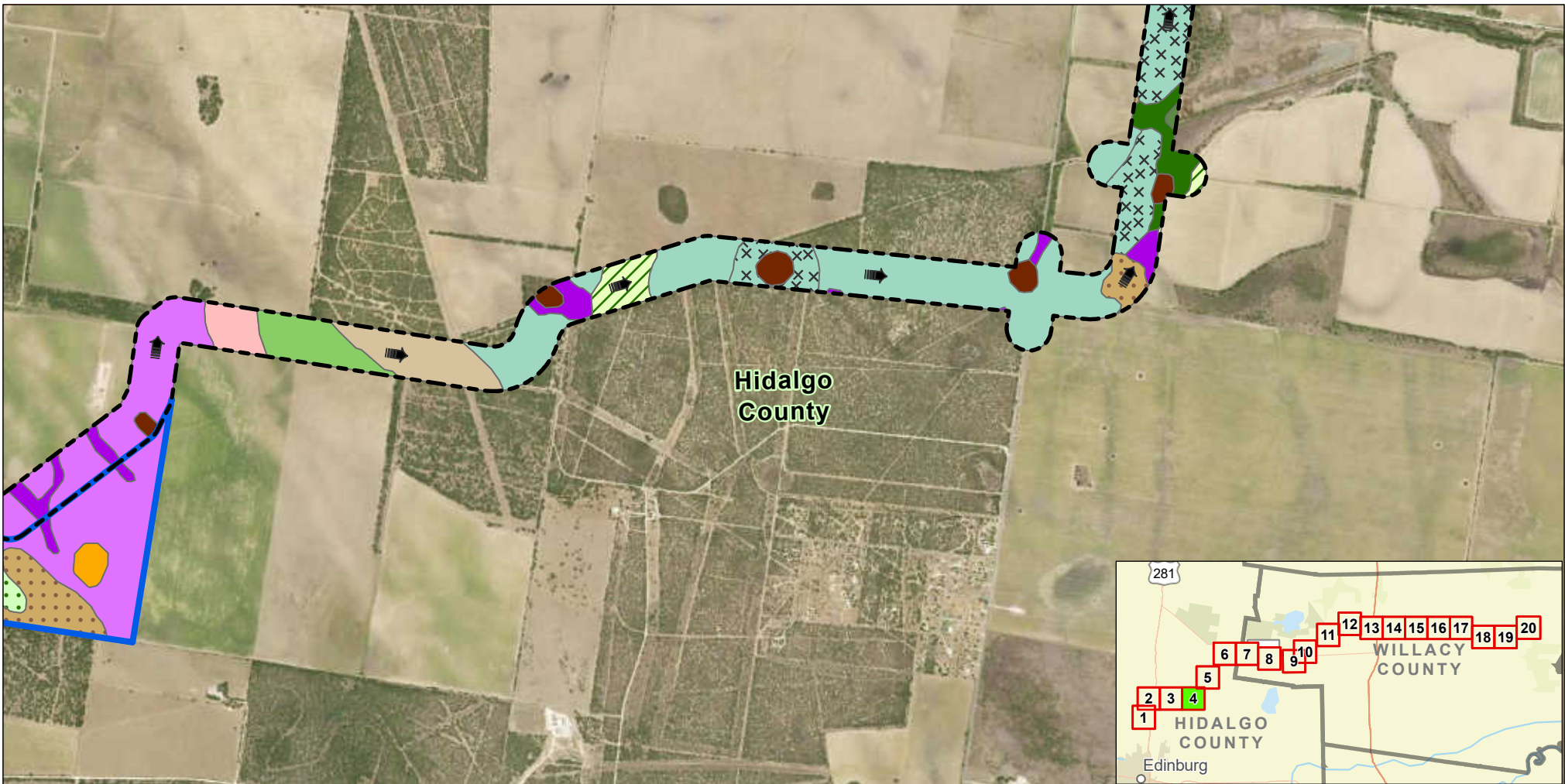


Exhibit 10 Alternative 1 Soils Map Sheet 3 of 20 Raymondville Drain Project

Author : Joel F. Aguirre Updated : 12/18/2023

DISCLAIMER: RRP Consulting Engineers makes no guarantees as to the accuracy of data used in the construction of this map.



- | | | | | |
|--|--|---|--|--|
| Comitas loamy fine sand, 0 to 3 percent slopes | Hargill fine sandy loam, 1 to 3 percent slopes | Hidalgo fine sandy loam, 0 to 1 percent slopes | Racombes sandy clay loam, saline, 0 to 1 percent slopes | Willacy fine sandy loam, 0 to 1 percent slopes |
| Delfina fine sandy loam, warm, 0 to 2 percent slopes | Hebronville sandy loam, 0 to 1 percent slopes | Hidalgo fine sandy loam, 1 to 3 percent slopes | Rio clay loam, ponded | Willacy fine sandy loam, 1 to 3 percent slopes |
| Hargill fine sandy loam, 0 to 1 percent slopes | Hebronville sandy loam, 1 to 3 percent slopes | Racombes sandy clay loam, 0 to 1 percent slopes | Tiocano clay, 0 to 1 percent slopes, occasionally ponded | |

- Legend:**
- Study Corridor
 - Drain Flow
 - Proposed Detention Basin

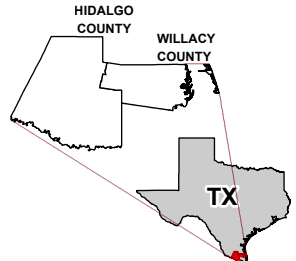
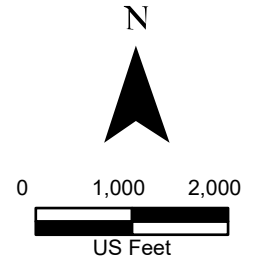
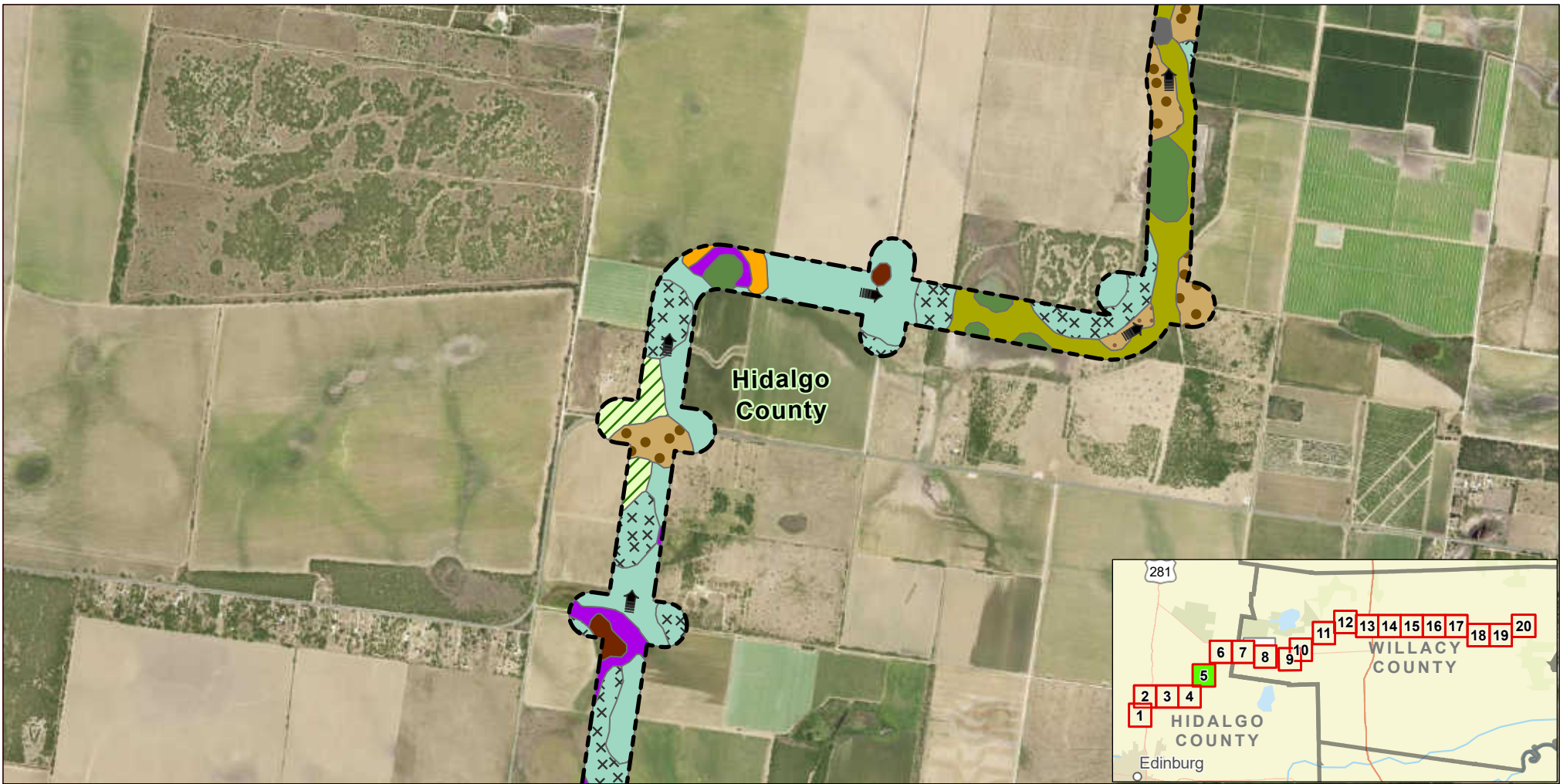


Exhibit 10 Alternative 1 Soils Map Sheet 4 of 20 Raymondville Drain Project

Author : Joel F. Aguirre Updated : 12/18/2023
 DISCLAIMER: RRP Consulting Engineers makes no guarantees as to the accuracy of data used in the construction of this map.



- | | | | |
|--|---|--|--|
| Delfina fine sandy loam, warm, 0 to 2 percent slopes | Hidalgo fine sandy loam, 1 to 3 percent slopes | Rio clay loam, saline, ponded | Willacy fine sandy loam, 0 to 1 percent slopes |
| Delfina fine sandy loam, warm, 1 to 3 percent slopes | Racombes sandy clay loam, 0 to 1 percent slopes | Rio fine sandy loam, saline, ponded | Willacy fine sandy loam, 1 to 3 percent slopes |
| Hargill fine sandy loam, 1 to 3 percent slopes | Rio clay loam, ponded | Tiocano clay, 0 to 1 percent slopes, occasionally ponded | |

Legend:

Study Corridor

Drain Flow

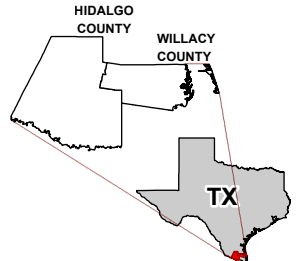
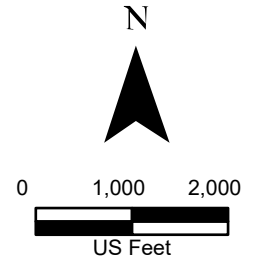
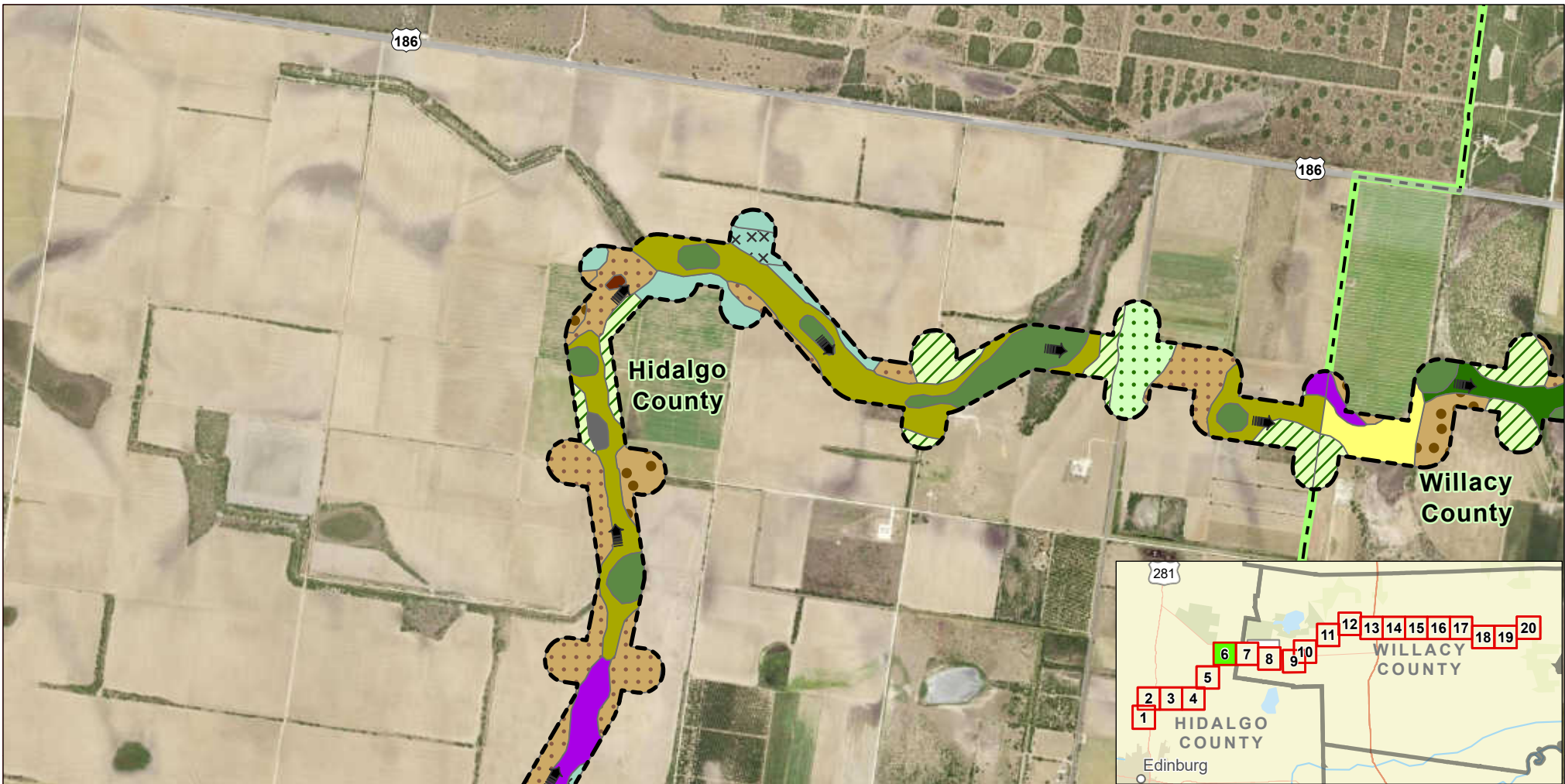


Exhibit 10 Alternative 1 Soils Map Sheet 5 of 20 Raymondville Drain Project

Author : Joel F. Aguirre Updated : 12/18/2023

DISCLAIMER: RRP Consulting Engineers makes no guarantees as to the accuracy of data used in the construction of this map.



- | | | | |
|--|---|-------------------------------------|--|
| Delfina fine sandy loam, warm, 0 to 2 percent slopes | Hargill fine sandy loam, 1 to 3 percent slopes | Rio clay loam, ponded | Tiocano clay, 0 to 1 percent slopes, occasionally ponded |
| Delfina fine sandy loam, warm, 1 to 3 percent slopes | Racombes sandy clay loam, 0 to 1 percent slopes | Rio clay loam, saline, ponded | Willacy fine sandy loam, 0 to 1 percent slopes |
| Hargill fine sandy loam, 0 to 1 percent slopes | Racombes sandy clay loam, saline, 0 to 1 percent slopes | Rio fine sandy loam, saline, ponded | Willacy fine sandy loam, 1 to 3 percent slopes |
| | | Rio sandy clay loam, saline, ponded | |

Legend:

- Study Corridor
- Drain Flow
- County Boundary

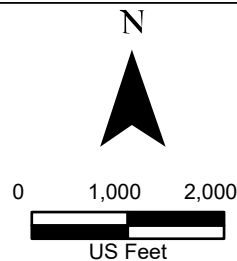
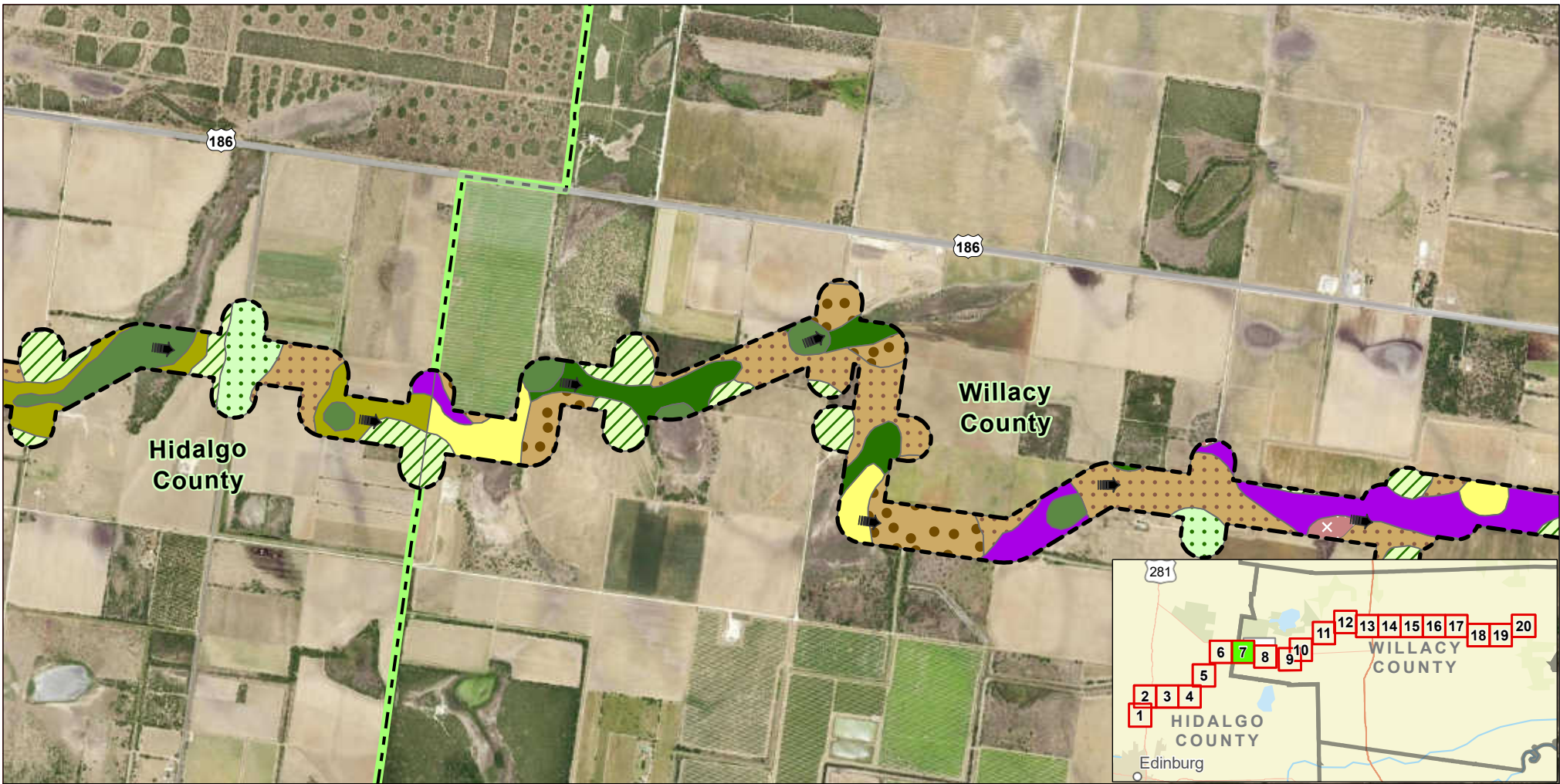


Exhibit 10 Alternative 1 Soils Map Sheet 6 of 20 Raymondville Drain Project

Author : Joel F. Aguirre Updated : 12/18/2023

DISCLAIMER: RRP Consulting Engineers makes no guarantees as to the accuracy of data used in the construction of this map.



- | | | | |
|--|---|-------------------------------------|--|
| Delfina fine sandy loam, warm, 0 to 2 percent slopes | Hargill fine sandy loam, 1 to 3 percent slopes | Rio fine sandy loam, saline, ponded | Tiocano clay, 0 to 1 percent slopes, occasionally ponded |
| Delfina fine sandy loam, warm, 1 to 3 percent slopes | Racombes sandy clay loam, 0 to 1 percent slopes | Rio sandy clay loam, ponded | |
| Hargill fine sandy loam, 0 to 1 percent slopes | Racombes sandy clay loam, saline, 0 to 1 percent slopes | Rio sandy clay loam, saline, ponded | |

Legend:

- Study Corridor
- Drain Flow
- County Boundary

N

0 1,000 2,000

US Feet

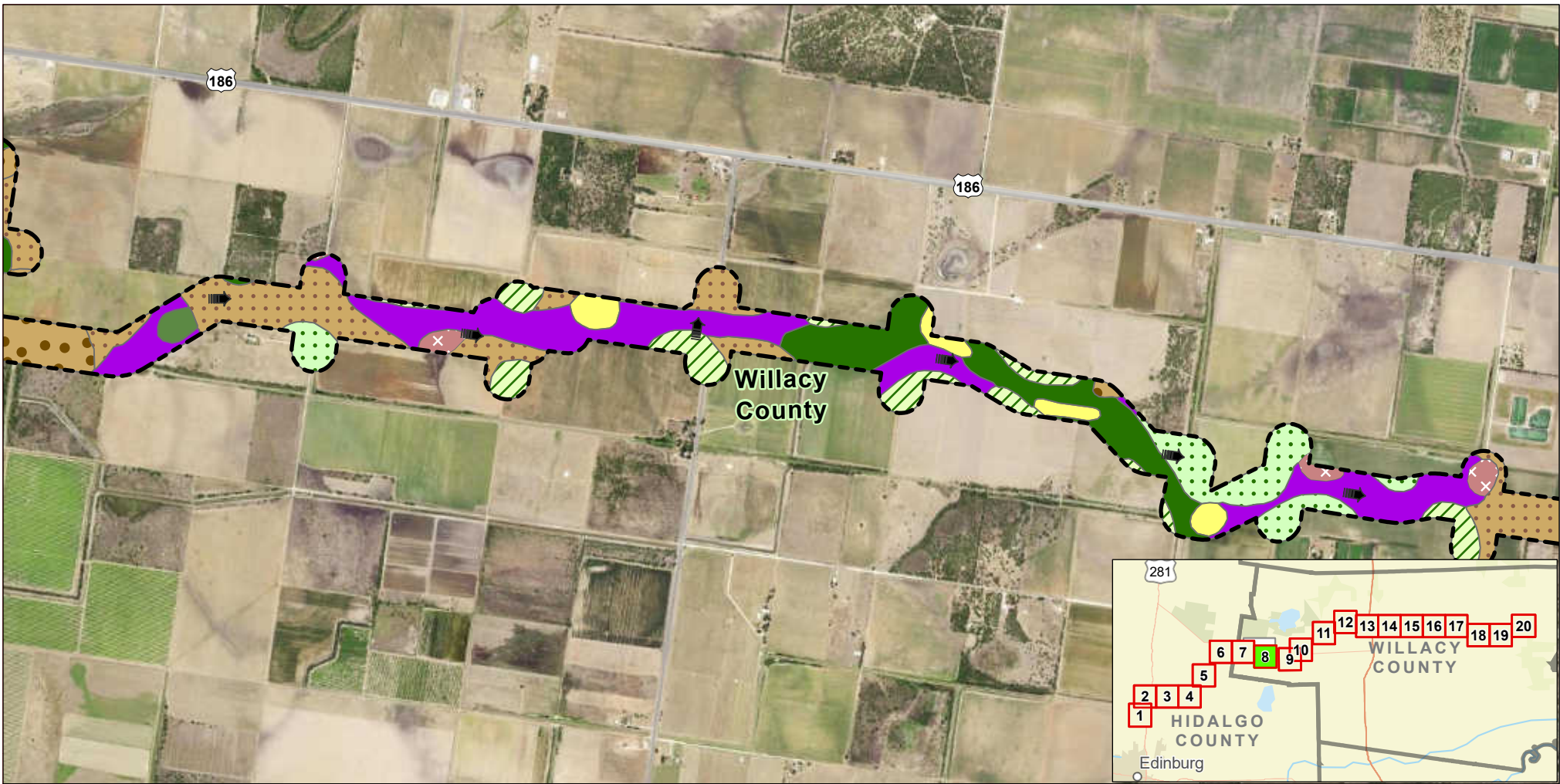
TX

Exhibit 10 Alternative 1 Soils Map Sheet 7 of 20 Raymondville Drain Project

Author : Joel F. Aguirre Updated : 12/18/2023

DISCLAIMER: RRP Consulting Engineers makes no guarantees as to the accuracy of data used in the construction of this map.

Path: S:\projects\0408000_Prop\Repository\GIS\RRP_Enr-to-Enr_Series.aprx



- | | | | |
|--|--|---|--|
| Delfina fine sandy loam, warm, 0 to 2 percent slopes | Hargill fine sandy loam, 0 to 1 percent slopes | Racombes sandy clay loam, 0 to 1 percent slopes | Rio sandy clay loam, saline, ponded |
| Delfina fine sandy loam, warm, 1 to 3 percent slopes | Hargill fine sandy loam, 1 to 3 percent slopes | Racombes sandy clay loam, saline, 0 to 1 percent slopes | Tiocono clay, 0 to 1 percent slopes, occasionally ponded |
| | | Rio sandy clay loam, ponded | |

Legend:

Study Corridor

Drain Flow

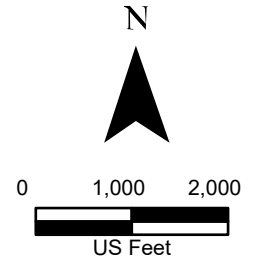
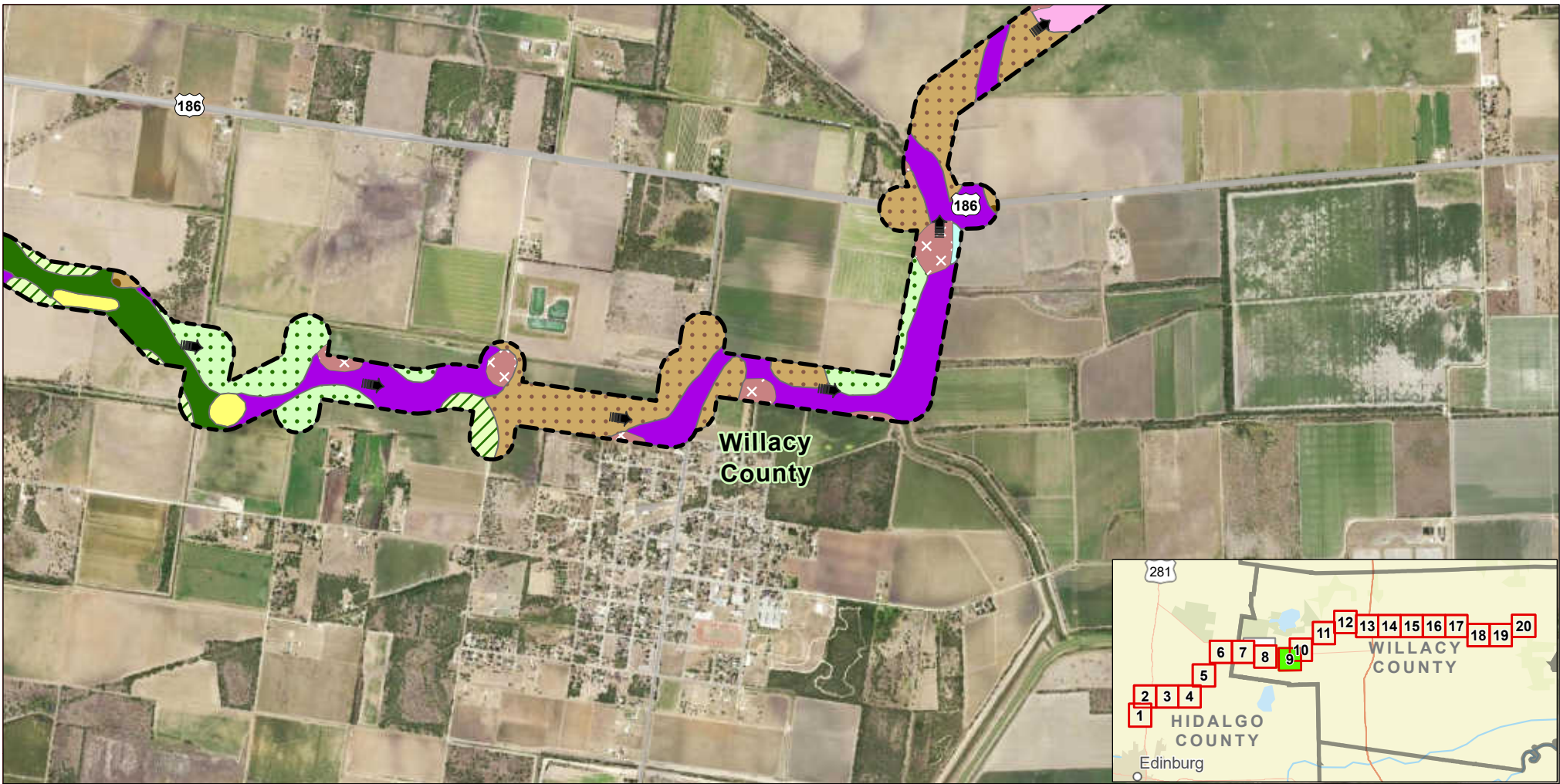


Exhibit 10 Alternative 1 Soils Map Sheet 8 of 20 Raymondville Drain Project

Author : Joel F. Aguirre Updated : 12/18/2023

DISCLAIMER: RRP Consulting Engineers makes no guarantees as to the accuracy of data used in the construction of this map.



- | | | | |
|--|--|---|-------------------------------------|
| Arents, loamy | Hargill fine sandy loam, 0 to 1 percent slopes | Racombes sandy clay loam, 0 to 1 percent slopes | Rio sandy clay loam, ponded |
| Delfina fine sandy loam, warm, 0 to 2 percent slopes | Hargill fine sandy loam, 1 to 3 percent slopes | Racombes sandy clay loam, saline, 0 to 1 percent slopes | Rio sandy clay loam, saline, ponded |
| Delfina fine sandy loam, warm, 1 to 3 percent slopes | | Raymondville clay loam | |

Legend:

- Study Corridor
- Drain Flow

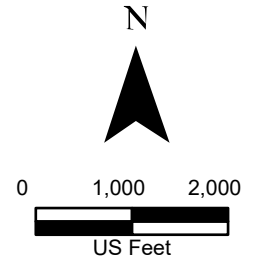
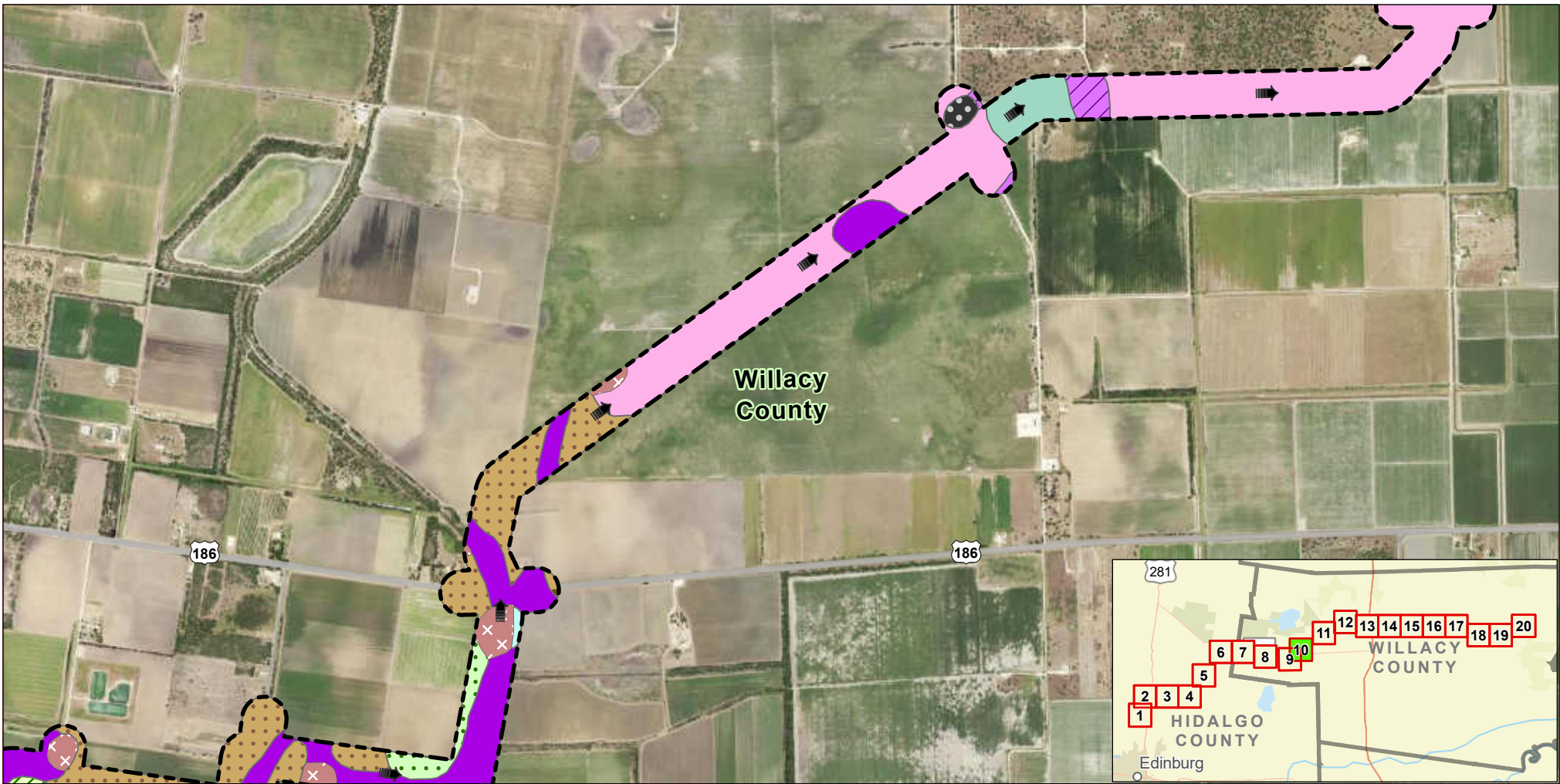


Exhibit 10 Alternative 1 Soils Map Sheet 9 of 20 Raymondville Drain Project

Author : Joel F. Aguirre Updated : 12/18/2023
 DISCLAIMER: RRP Consulting Engineers makes no guarantees as to the accuracy of data used in the construction of this map.



- | | | | |
|--|---|--|-----------------------------|
| Arents, loamy | Hargill fine sandy loam, 0 to 1 percent slopes | Hidalgo sandy clay loam, 0 to 1 percent slopes | Raymondville clay loam |
| Delfina fine sandy loam, warm, 0 to 2 percent slopes | Hargill fine sandy loam, 1 to 3 percent slopes | Mercedes clay | Rio sandy clay loam, ponded |
| Delfina fine sandy loam, warm, 1 to 3 percent slopes | Racombes sandy clay loam, 0 to 1 percent slopes | Willacy fine sandy loam, 0 to 1 percent slopes | |

Legend:

- Study Corridor
- Drain Flow

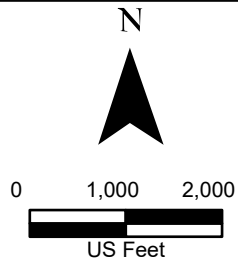
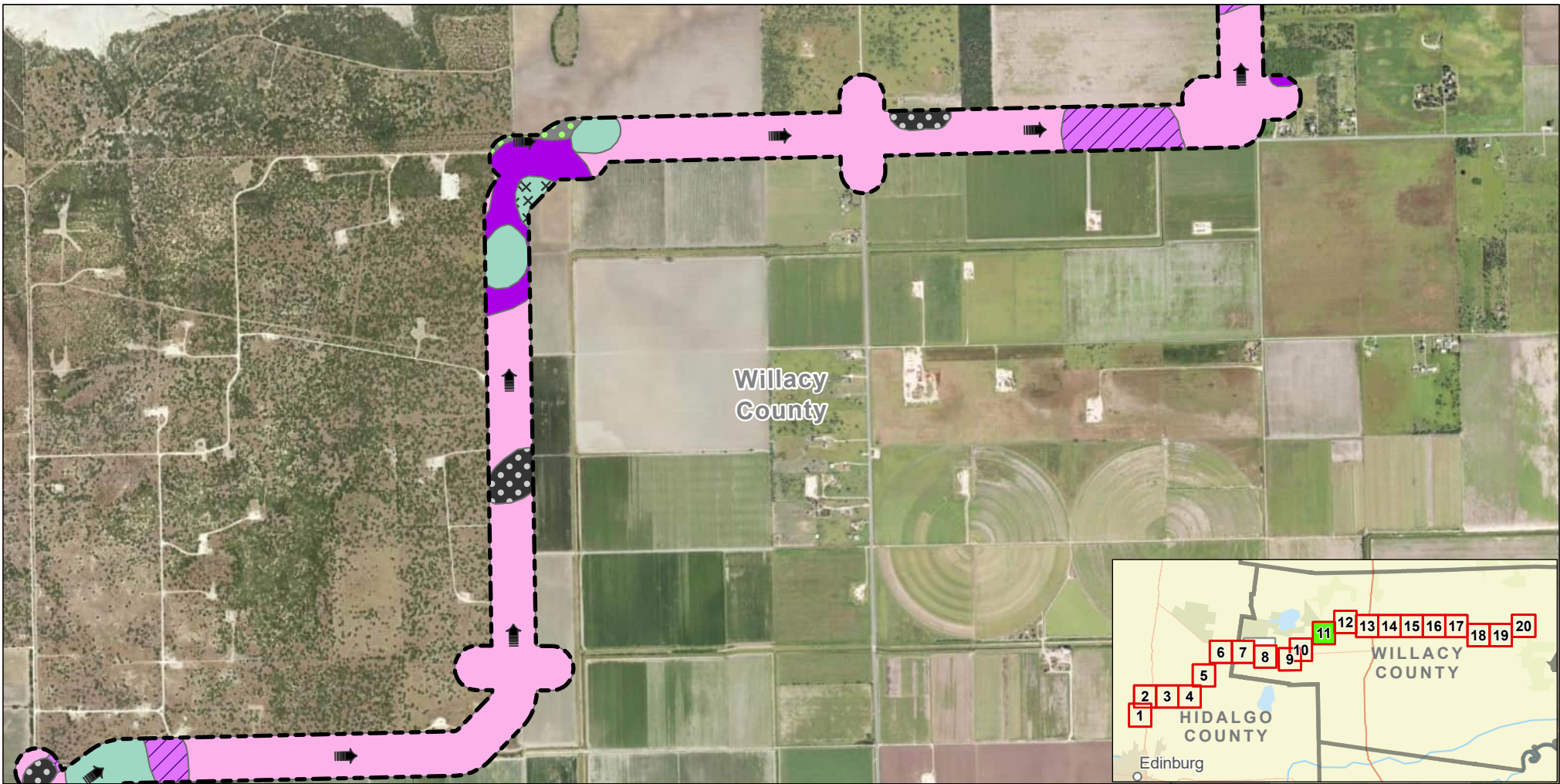


Exhibit 10 Alternative 1 Soils Map Sheet 10 of 20 Raymondville Drain Project

Author : Joel F. Aguirre Updated : 12/18/2023

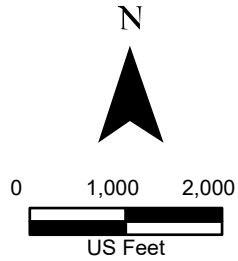
DISCLAIMER: RRP Consulting Engineers makes no guarantees as to the accuracy of data used in the construction of this map.



- | | | |
|--|---|------------------------|
| Willacy fine sandy loam, 1 to 3 percent slopes | Racombes sandy clay loam, 0 to 1 percent slopes | Raymondville clay loam |
| Willacy fine sandy loam, 0 to 1 percent slopes | Hidalgo sandy clay loam, 0 to 1 percent slopes | Mercedes clay |
| | | Lyford sandy clay loam |

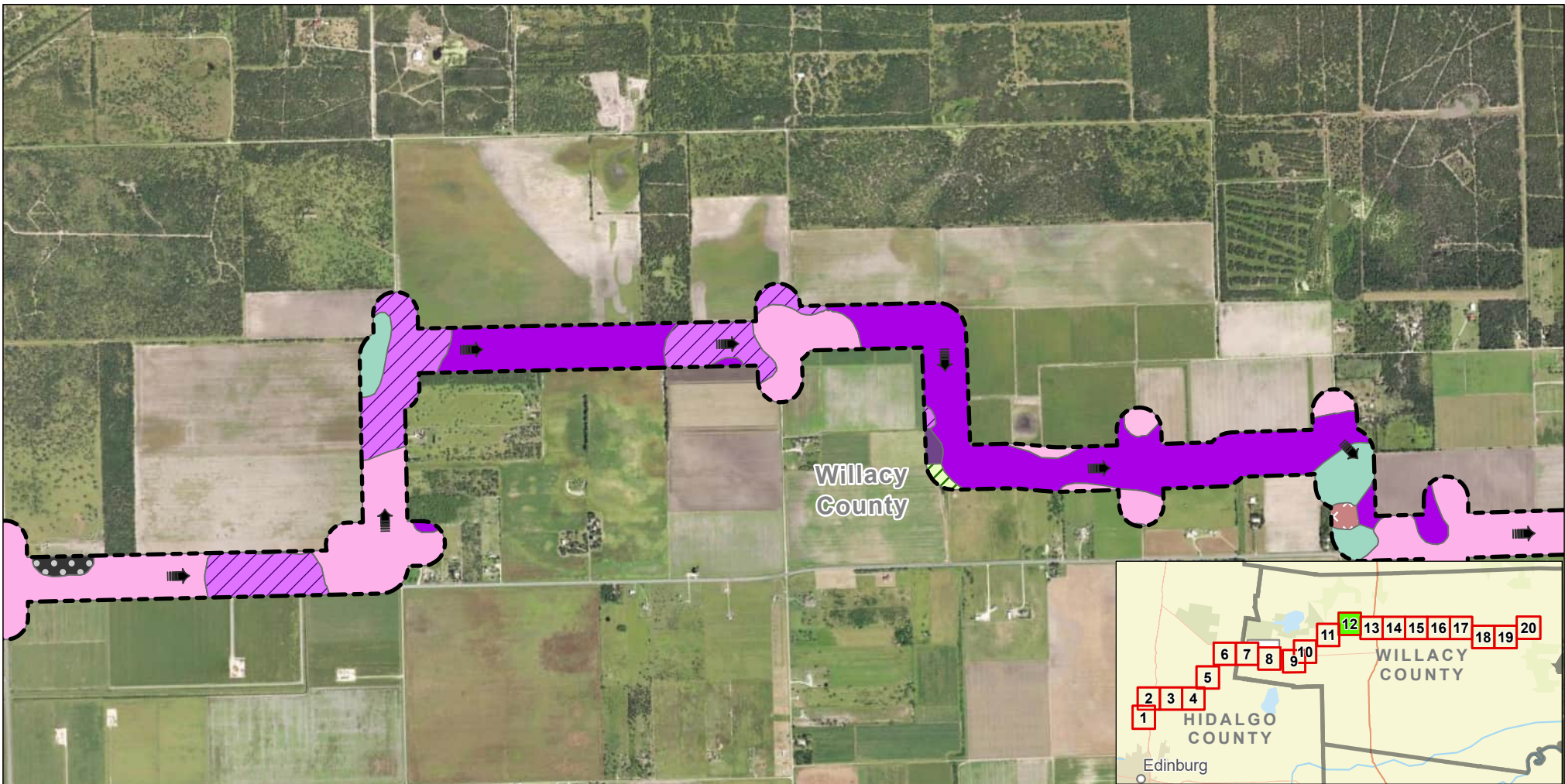
Legend:

- Study Corridor
- Drain Flow



**Exhibit 10
Alternative 1
Soils Map
Sheet 11 of 20
Raymondville Drain Project**

Author : Joel F. Aguirre Updated : 10/9/2023
 DISCLAIMER: RRP Consulting Engineers makes no guarantees as to the accuracy of data used in the construction of this map.



- | | | |
|---|--|------------------------|
| Willacy fine sandy loam, 0 to 1 percent slopes | Hargill fine sandy loam, 1 to 3 percent slopes | Mercedes clay |
| Racombes sandy clay loam, 0 to 1 percent slopes | Ustorhents, loamy | Lozano fine sandy loam |
| Hidalgo sandy clay loam, 0 to 1 percent slopes | Rio sandy clay loam, ponded | Arents, loamy |
| | Raymondville clay loam | |

Legend:

Study Corridor

Drain Flow

N

0 1,000 2,000

US Feet

HIDALGO COUNTY
WILLACY COUNTY

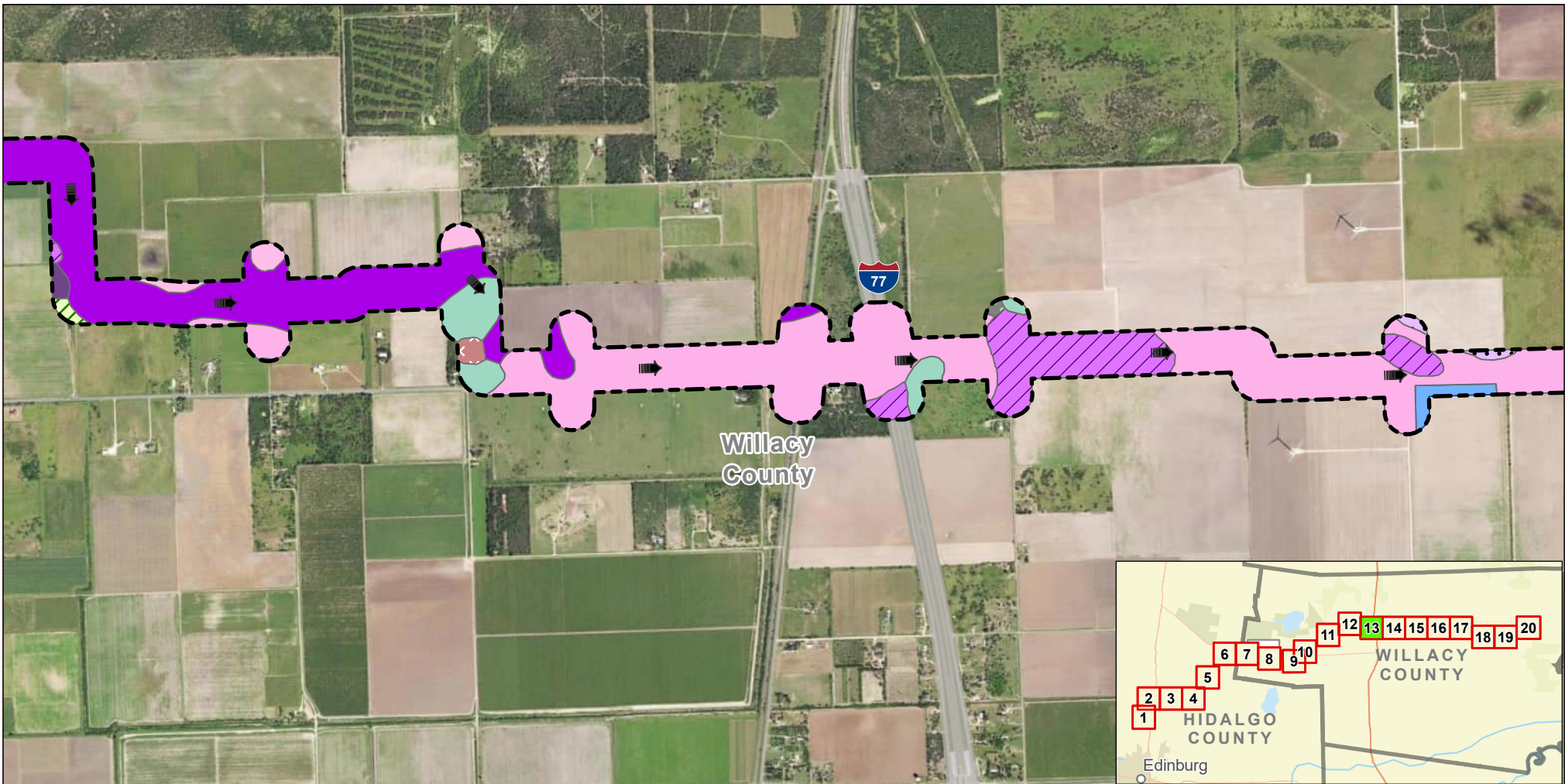
TX

Exhibit 10 Alternative 1 Soils Map Sheet 12 of 20 Raymondville Drain Project

Author : Joel F. Aguirre Updated : 10/9/2023

DISCLAIMER: RRP Consulting Engineers makes no guarantees as to the accuracy of data used in the construction of this map.

Path: S:\projects\04080000_Prop\Report\GIS\RRP_Ext-Enc_Series.aprx



- | | | | |
|---|--|-----------------------------|------------------------|
| Willacy fine sandy loam, 0 to 1 percent slopes | Hidalgo sandy clay loam, 0 to 1 percent slopes | Ustortherents, loamy | Lozano fine sandy loam |
| Racombes sandy clay loam, 0 to 1 percent slopes | Hargill fine sandy loam, 1 to 3 percent slopes | Rio sandy clay loam, ponded | Arents, loamy |
| Nueces fine sand, 0 to 3 percent slopes | Water | Raymondville clay loam | |
| | | Lyford sandy clay loam | |

Legend:

- Study Corridor
- Drain Flow

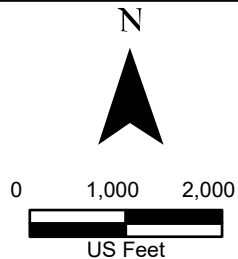
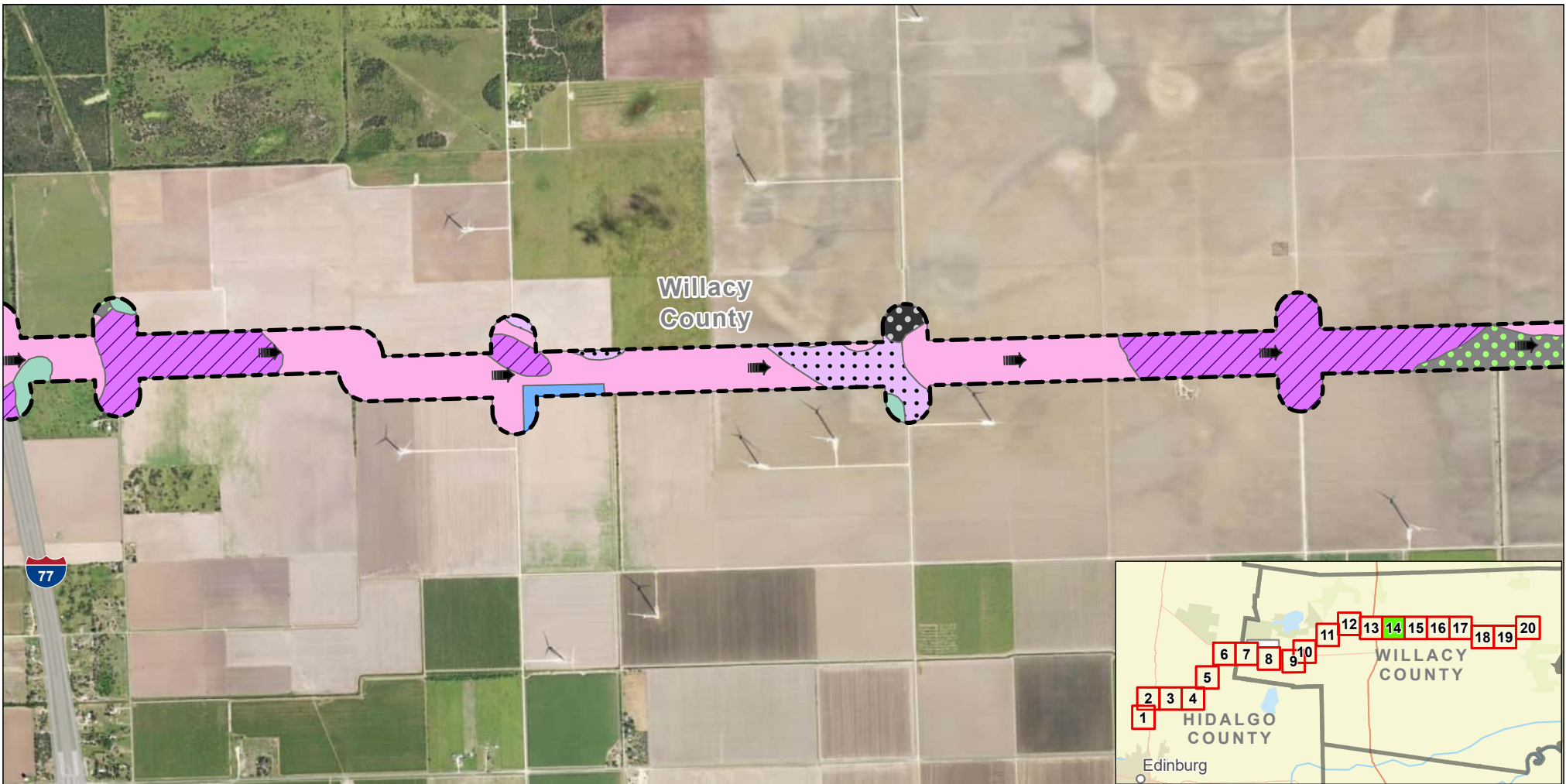


Exhibit 10 Alternative 1 Soils Map Sheet 13 of 20 Raymondville Drain Project

Author : Joel F. Aguirre Updated : 10/9/2023

DISCLAIMER: RRP Consulting Engineers makes no guarantees as to the accuracy of data used in the construction of this map.



- | | | |
|--|--|------------------------|
| Willacy fine sandy loam, 0 to 1 percent slopes | Hidalgo sandy clay loam, 0 to 1 percent slopes | Mercedes clay |
| Nueces fine sand, 0 to 3 percent slopes | Water | Lyford sandy clay loam |
| Raymondville clay loam | | Lozano fine sandy loam |

Legend:

- Study Corridor
- Drain Flow

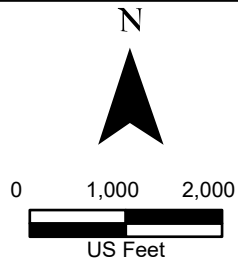
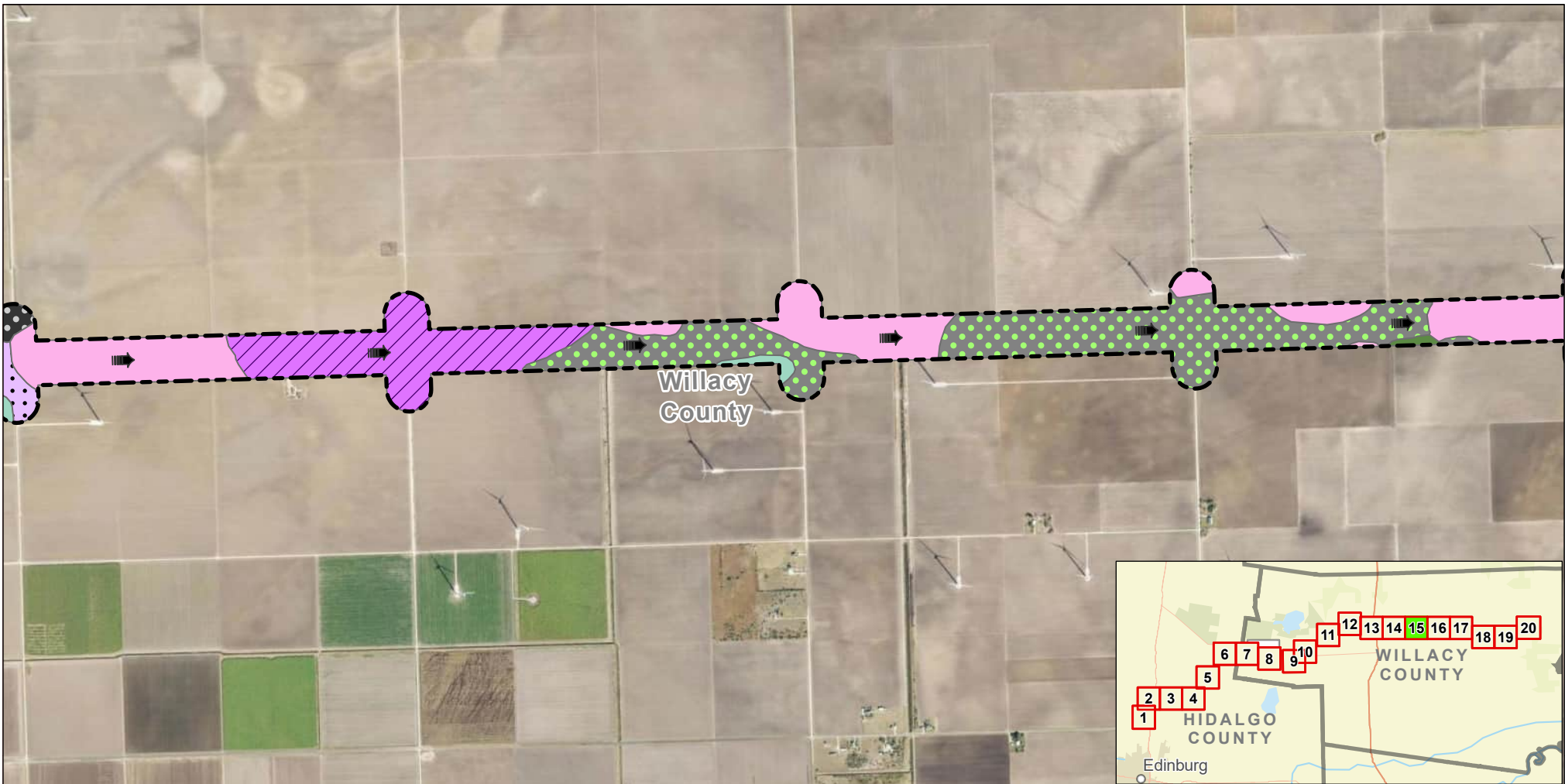


Exhibit 10 Alternative 1 Soils Map Sheet 14 of 20 Raymondville Drain Project

Author : Joel F. Aguirre Updated : 10/9/2023

DISCLAIMER: RRP Consulting Engineers makes no guarantees as to the accuracy of data used in the construction of this map.



- | | | |
|--|--|------------------------|
| Willacy fine sandy loam, 0 to 1 percent slopes | Nueces fine sand, 0 to 3 percent slopes | Mercedes clay |
| Tiocano clay, 0 to 1 percent slopes, occasionally ponded | Hidalgo sandy clay loam, 0 to 1 percent slopes | Lyford sandy clay loam |
| | Raymondville clay loam | Lozano fine sandy loam |

Legend:

- Study Corridor
- Drain Flow

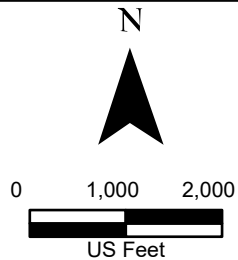
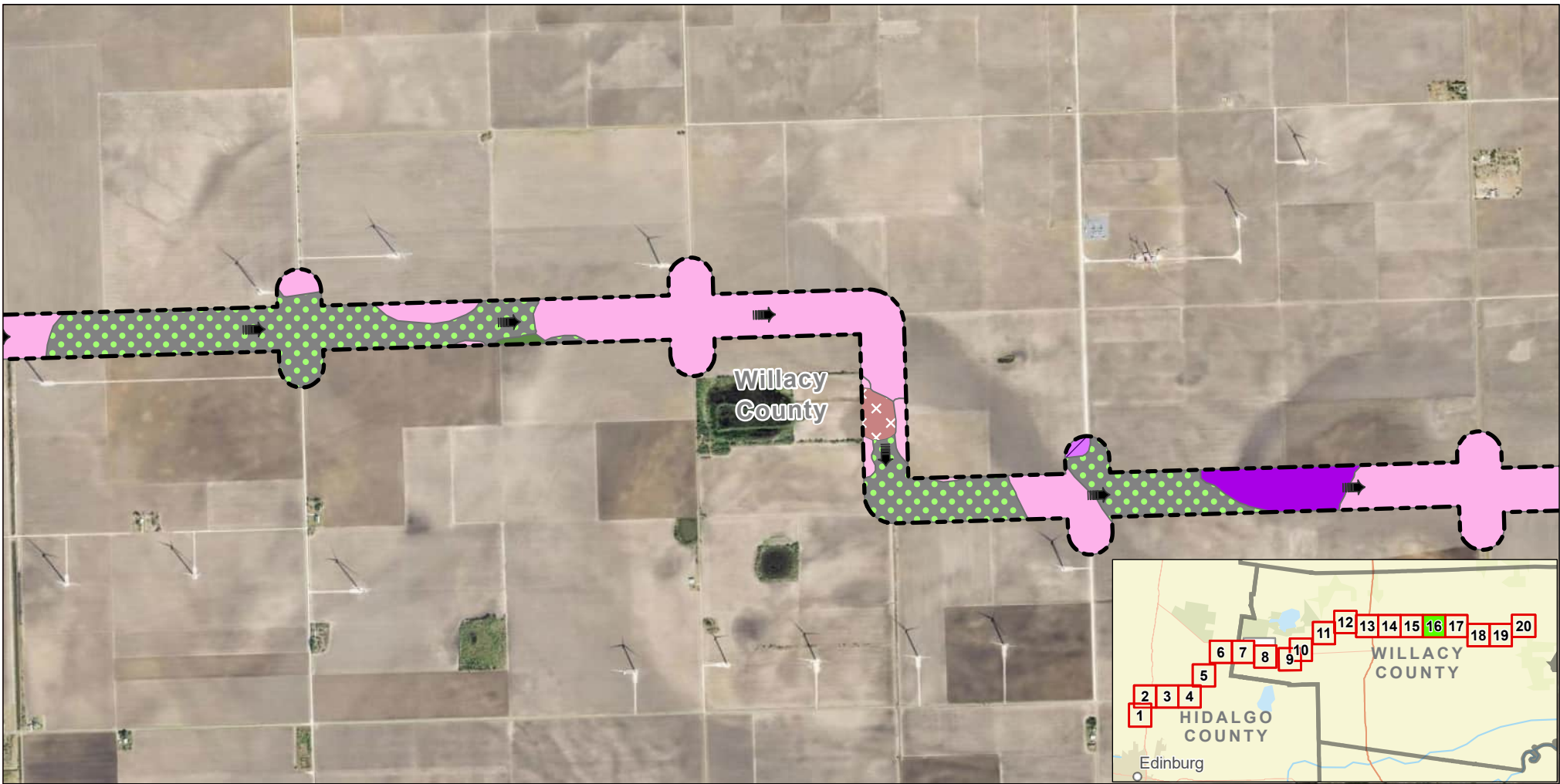


Exhibit 10 Alternative 1 Soils Map Sheet 15 of 20 Raymondville Drain Project

Author : Joel F. Aguirre Updated : 10/9/2023

DISCLAIMER: RRP Consulting Engineers makes no guarantees as to the accuracy of data used in the construction of this map.



- | | | |
|--|--|------------------------|
| Tiocano clay, 0 to 1 percent slopes, occasionally ponded | Hidalgo sandy clay loam, 0 to 1 percent slopes | Raymondville clay loam |
| Racombes sandy clay loam, 0 to 1 percent slopes | Rio sandy clay loam, ponded | Lyford sandy clay loam |
| | | Lozano fine sandy loam |

Legend:

- Study Corridor
- Drain Flow

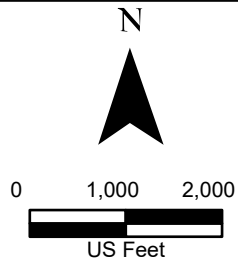
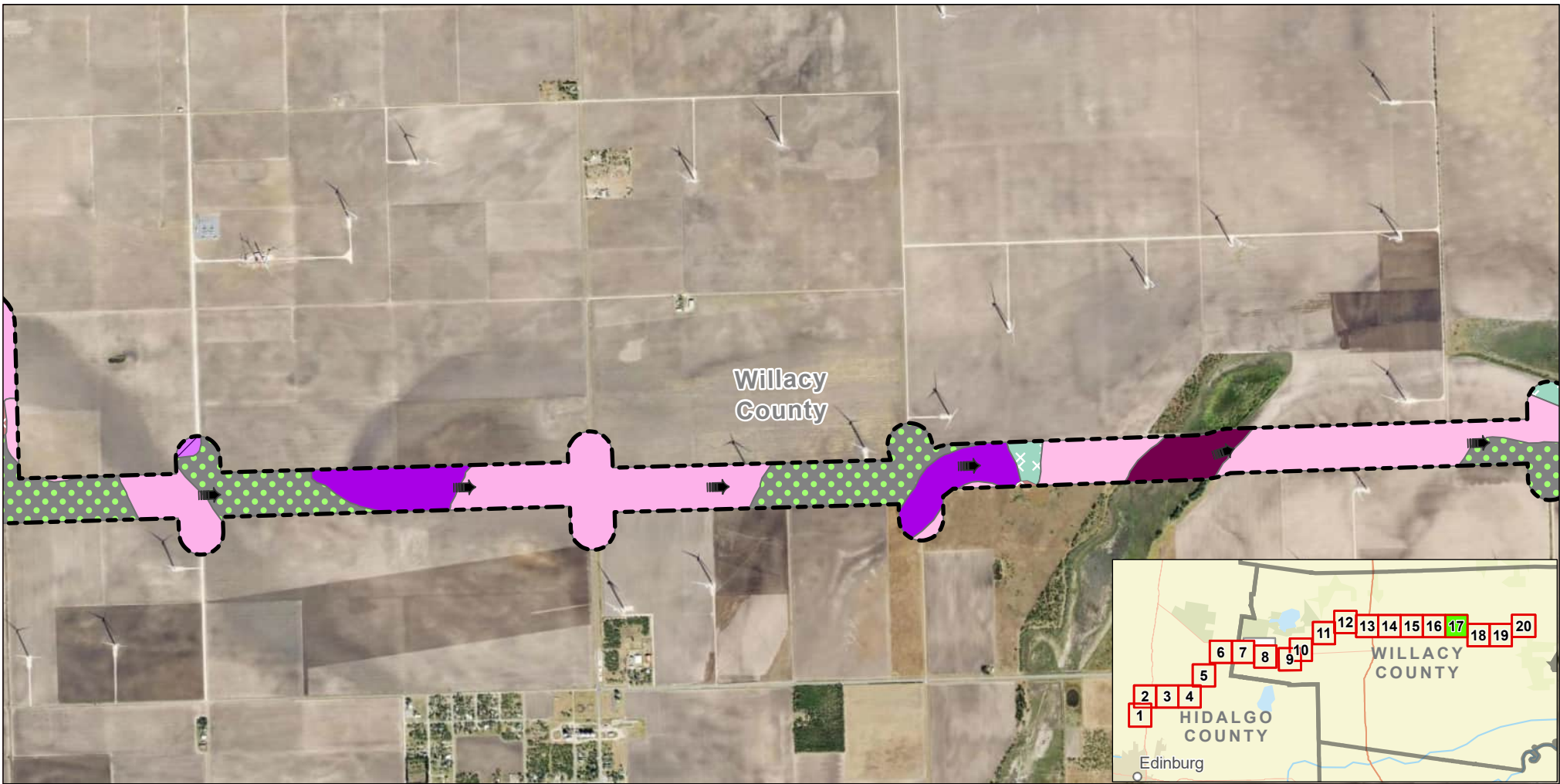


Exhibit 10 Alternative 1 Soils Map Sheet 16 of 20 Raymondville Drain Project

Author : Joel F. Aguirre Updated : 10/9/2023

DISCLAIMER: RRP Consulting Engineers makes no guarantees as to the accuracy of data used in the construction of this map.



- | | | |
|---|---|-----------------------------|
| Racombes sandy clay loam, 0 to 1 percent slopes | Willamar fine sandy loam, strongly saline, 0 to 1 percent slopes, occasionally ponded | Rio sandy clay loam, ponded |
| Hidalgo sandy clay loam, 0 to 1 percent slopes | Willamar fine sandy loam, 0 to 1 percent slopes | Raymondville clay loam |
| | | Lyford sandy clay loam |
| | | Lozano fine sandy loam |

Legend:

- Study Corridor
- Drain Flow

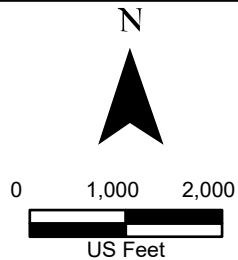
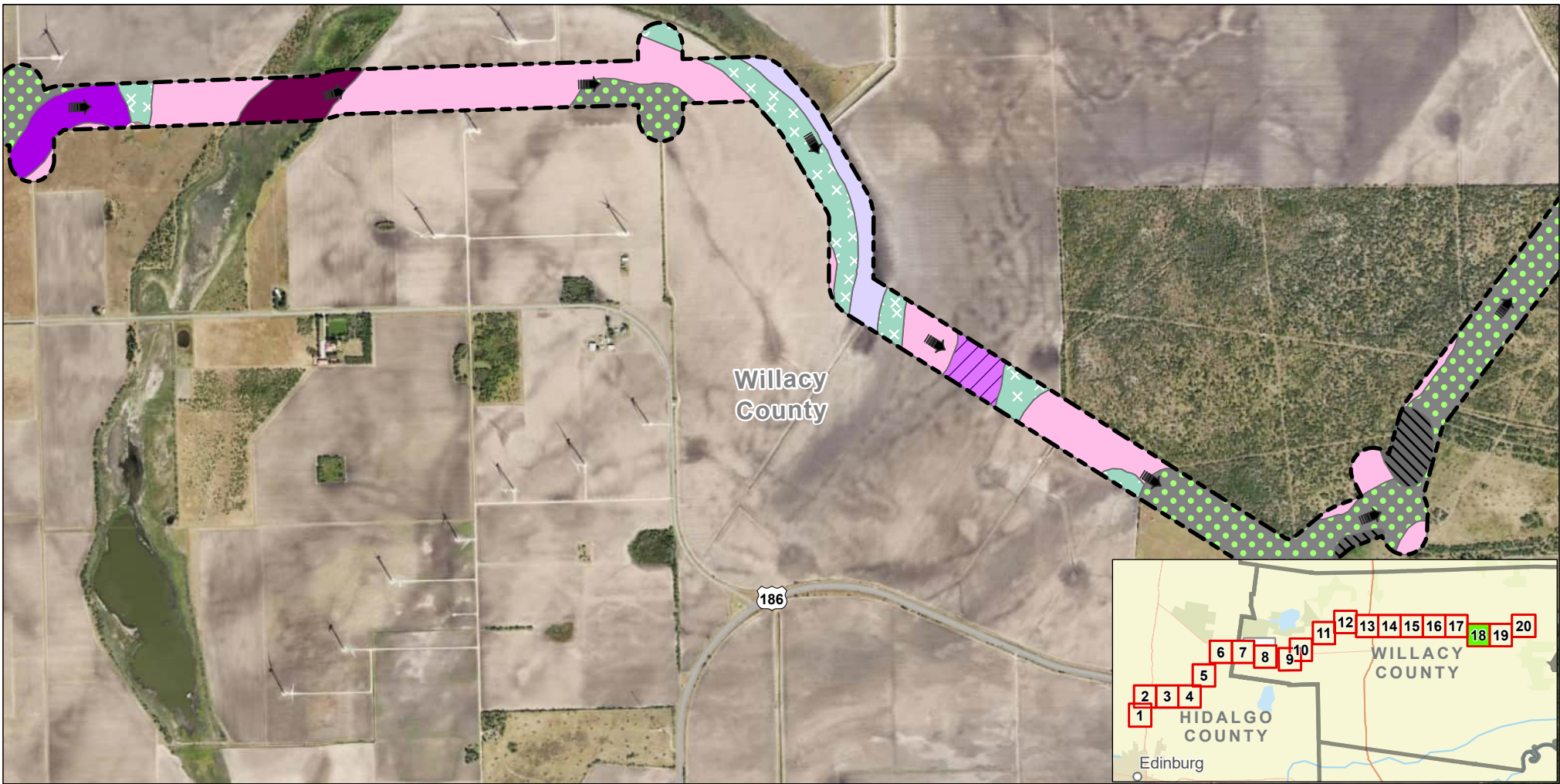











Exhibit 10 Alternative 1 Soils Map Sheet 17 of 20 Raymondville Drain Project



Author : Joel F. Aguirre Updated : 10/9/2023

DISCLAIMER: RRP Consulting Engineers makes no guarantees as to the accuracy of data used in the construction of this map.



- | | | |
|---|---|--|
|  Racombes sandy clay loam, 0 to 1 percent slopes |  Willamar fine sandy loam, 0 to 1 percent slopes |  Lomalta clay, 0 to 1 percent slopes, occasionally ponded |
|  Hidalgo sandy clay loam, 0 to 1 percent slopes |  Rio sandy clay loam, ponded |  Incell clay, 0 to 1 percent slopes, occasionally ponded |
|  Willamar fine sandy loam, strongly saline, 0 to 1 percent slopes, occasionally ponded |  Lyford sandy clay loam | |
| |  Lozano fine sandy loam | |

Legend:

-  Study Corridor
-  Drain Flow

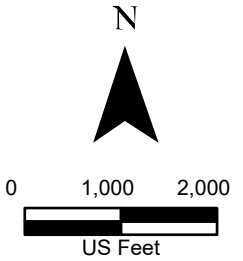
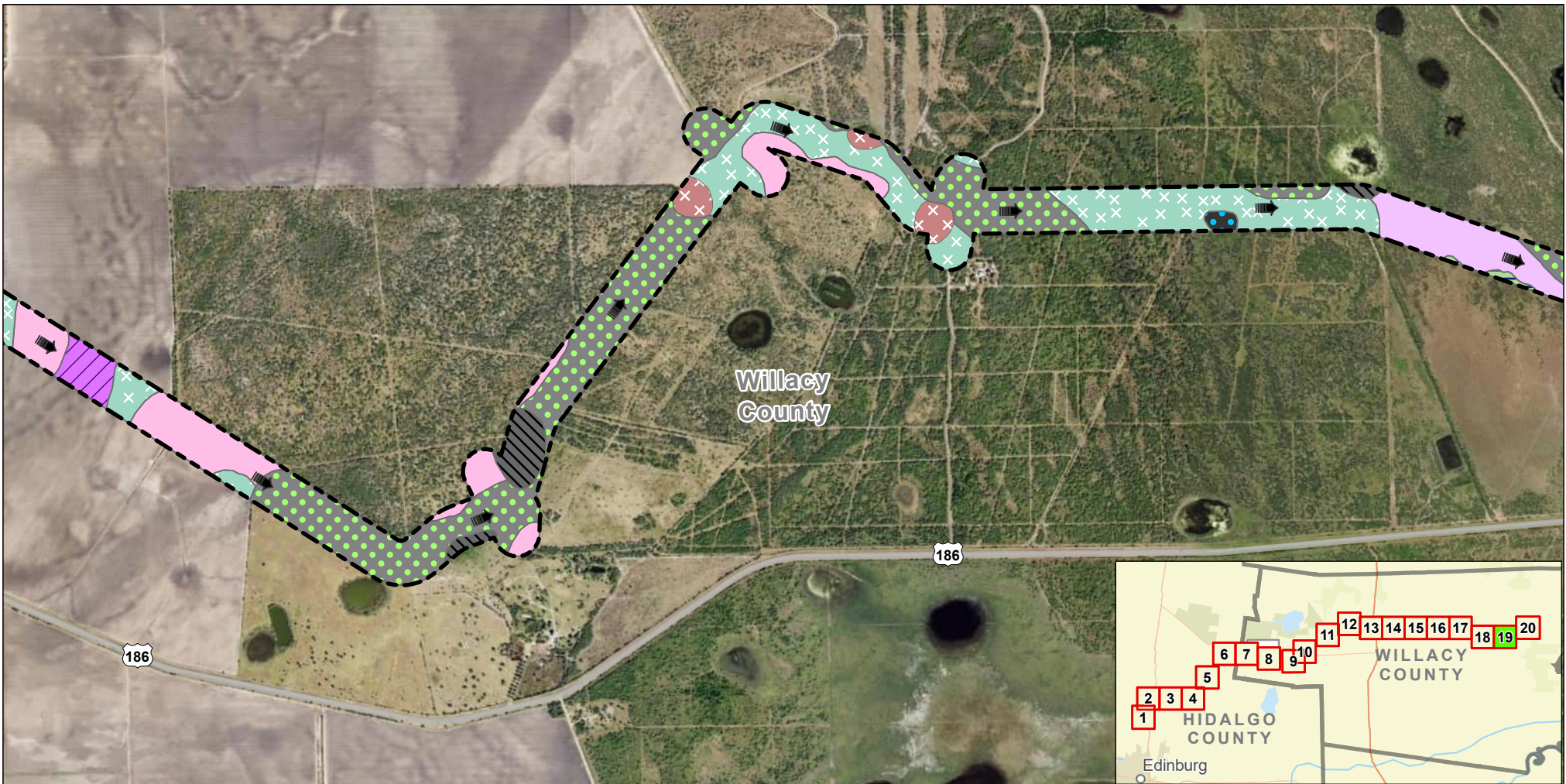













Exhibit 10 Alternative 1 Soils Map Sheet 18 of 20 Raymondville Drain Project

Author : Joel F. Aguirre Updated : 10/9/2023
 DISCLAIMER: RRP Consulting Engineers makes no guarantees as to the accuracy of data used in the construction of this map.



- | | | |
|---|--|--|
|  Hidalgo sandy clay loam, 0 to 1 percent slopes |  Mercedes clay, ponded |  Latina sandy clay loam, 0 to 1 percent slopes, occasionally ponded, rarely flooded |
|  Willamar fine sandy loam, 0 to 1 percent slopes |  Lyford sandy clay loam |  Jarron sandy clay loam |
|  Rio sandy clay loam, ponded |  Lozano fine sandy loam |  Incell clay, 0 to 1 percent slopes, occasionally ponded |

Legend:

-  Study Corridor
-  Drain Flow

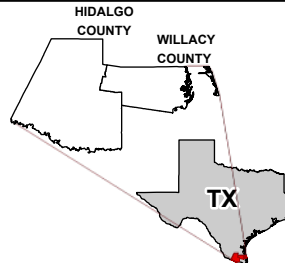
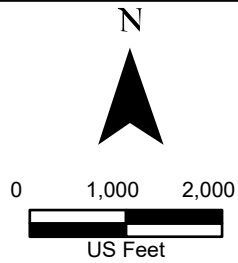
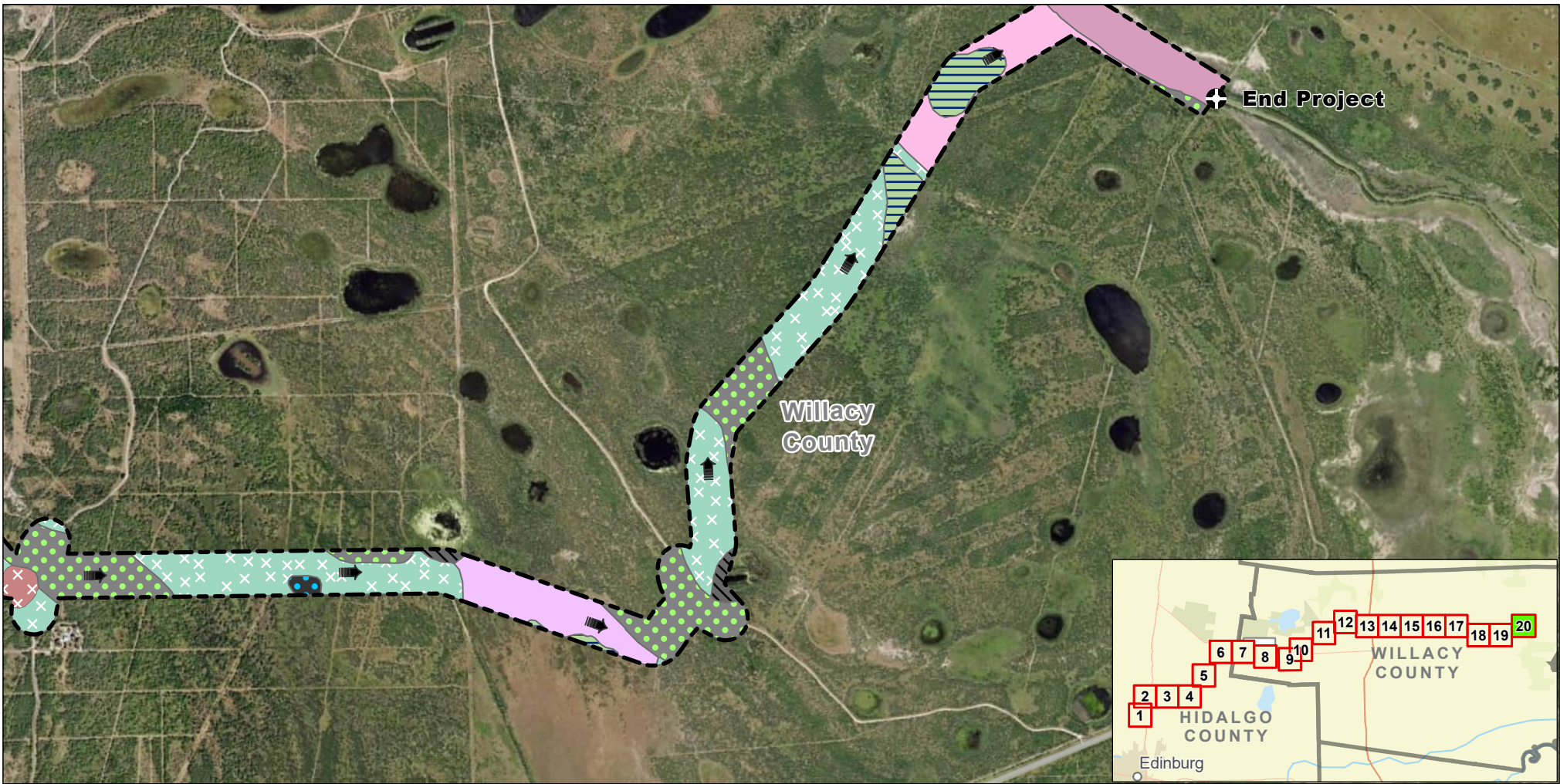


Exhibit 10 Alternative 1 Soils Map Sheet 19 of 20 Raymondville Drain Project

Author : Joel F. Aguirre Updated : 10/9/2023
 DISCLAIMER: RRP Consulting Engineers makes no guarantees as to the accuracy of data used in the construction of this map.



- | | | | | | |
|--|---|--|--|--|---|
| | Willamar fine sandy loam, 0 to 1 percent slopes | | Lozano fine sandy loam | | Incell clay, 0 to 1 percent slopes, occasionally ponded |
| | Rio sandy clay loam, ponded | | Latina sandy clay loam, 0 to 1 percent slopes, occasionally ponded, rarely flooded | | Arrada sandy clay loam, 0 to 1 percent slopes, very frequently flooded, frequently ponded |
| | Mercedes clay, ponded | | Lyford sandy clay loam | | Jarron sandy clay loam |

Legend:

- Study Corridor
- Drain Flow

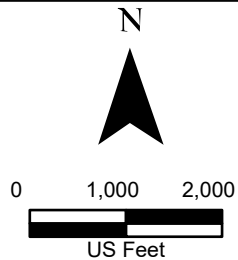


Exhibit 10 Alternative 1 Soils Map Sheet 20 of 20 Raymondville Drain Project

Author : Joel F. Aguirre Updated : 10/9/2023

DISCLAIMER: RRP Consulting Engineers makes no guarantees as to the accuracy of data used in the construction of this map.